

AVK PRODUCT RANGE



		<p>THE SOLUTIONS YOU NEED THE STANDARDS YOU EXPECT</p>
		

Expect... **AVK**



THE AVK GROUP



DEDICATED PEOPLE

3,900+ employees,
hereof approx. 250 in
AVK International A/S



GLOBAL ORGANISATION

100+ AVK companies
worldwide



CONTINUOUS GROWTH

Net turnover EUR 673
million (2017/18)

AVK YOUR LONG-TERM PARTNER



AVK has been in the valve business for almost 50 years. Today AVK is a global leader within valves, hydrants and accessories for water supply, gas supply, wastewater treatment and fire protection.

The wide AVK range

AVK International A/S specialise in manufacturing gate valves, double eccentric butterfly valves, ball check valves, service connection valves, Supa Maxi™ couplings, extension spindles and selected types of hydrants and accessories.

We add numerous products to our range from the more than 20 other AVK factories in Europe as well as from AVK factories worldwide. These AVK factories specialise in other types of valves, hydrants and accessories, and jointly we are capable of offering a very wide selection of high quality products.

Global leadership and local commitment

Our geographical presence and product range is global, but our focus is local. Our customers are serviced by local sales organisations, in AVK's own sales companies or within our carefully selected distributors, who engage in their customers' needs. We are therefore able to offer tailor-made solutions that match local specifications.

A beneficial partnership

We want to build and invest in a longterm partnership with our customers. To earn our role as a long-term partner, we strive to deliver value for money. We deliver error-free, durable and maintenance-free products that constitute the most cost-efficient solution for our partners in the long run.

EXPECT QUALITY IN EVERY STEP

State-of-the-art rubber technology

It is crucial that the rubber components inside valves, hydrants and accessories are of the highest quality to ensure a safe, watertight seal and trouble-free operation, even after many years without use. In our rubber factory, AVK GUMMI A/S, we develop and produce our own rubber components to make sure that they meet our uncompromising standards of excellence.

Our gate valve wedge design and other market-leading innovations provide the reliability you need to safeguard your network, your supply and the health and safety of your customers. This is especially important within water supply to avoid contamination and within gas supply to avoid even the tiniest leakage. AVK is the safe choice since we give high priority to quality and compliance.

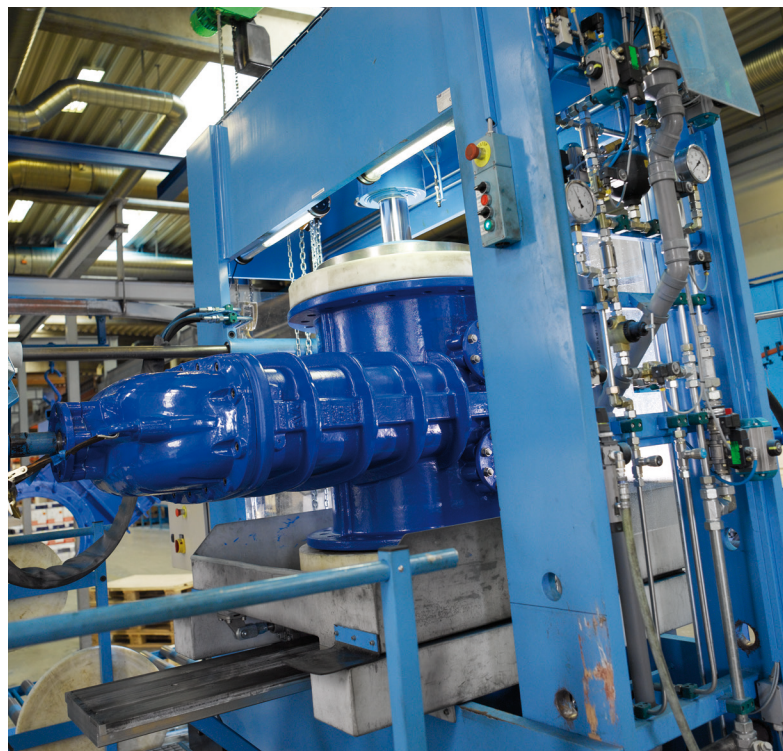
For over 40 years, AVK GUMMI has made rubber components for the water, natural gas, healthcare and food industries. Our complete production control and one of the world's most advanced mixing plants enable us to offer unique rubber compounds of exceptional quality and uniformity, which are approved worldwide for drinking water, gas and many other applications.

Streamlined processes facilitate short lead times

In our factories, all our products undergo careful surface treatment and rigorous testing to ensure maximum durability and to make certain they can withstand even the harshest environments. By using technologies that excel in precision, we make sure that our products are designed to deliver the highest level of performance and quality. We are in full control of the supply chain from raw materials to

finished product with meticulous attention to quality control, traceability and pressure testing of every single valve.

Based on LEAN principles, we have streamlined our work processes and flow of goods to ensure the fastest possible lead time. We store a large selection of AVK's product range in our 13,000 m² warehouse fitted with up-to-date equipment, and our warehouse management system enables us to optimise our inventory and handling. Altogether, this allows us to offer great delivery service.



EXPECT US TO TAKE RESPONSIBILITY

Water is a scarce resource

Access to clean water is often taken for granted, just like the fresh air we breathe. But we are facing an invisible, yet crucial problem of water loss, also referred to as non-revenue water. Non-revenue water is water that has been produced and cleaned but which is lost somewhere in the water distribution system without being used or paid for, and the levels of non-revenue water range from about 5% to as much as 80% in certain areas.

AVK offers a wide range of reliable and long-lasting valves, including control valves, that can help reduce water losses and contribute to efficient water supply management by maintaining a certain pressure, flow or level, regardless of changes in the supply network.

Pressure management is considered the single most beneficial and cost-effective leakage management activity, but it is also of

considerable importance to use valves of a sufficient quality to ensure tightness many years after the valves have been installed, whenever they have been used frequently or not at all.

Sustainable production

The AVK Group has outlined strict objectives for activities and processes in its manufacturing companies regarding recycling as well as energy and water consumption. In addition, our suppliers must comply with our ethical standards to be a certified supplier of the AVK Group, since it is vital for AVK to ensure sustainability throughout the supply chain. Therefore, we choose partners who are strongly committed to complying with international legislation in the field of labour.

Supporting world-transforming goals

Our solutions contribute to the UN sustainable development goals by ensuring clean water and sanitation, by reducing water waste, electricity

consumption and CO₂ emissions, and by turning wastewater into affordable and clean energy.

Our valve design is not only optimised to ensure long durability and 100% tightness, but also offers low operating torque, which allows for the use of cost-efficient electrical actuators. In addition, we offer knife gate valves with dedicated linear electrical actuators featuring very low energy consumption.

AVK has entered into partnerships with other leading Danish companies with the purpose of sharing knowledge within water technology and offering joint solutions for a more sustainable world.

Global goals for sustainable development



EXPECT LASTING INNOVATIONS

Inhouse R&D

In our Development Department in Denmark, ideas and suggestions for new products are gathered, and existing products are updated continuously.

We use FEA (Finite Element Analysis) to optimise the strength and geometry of our components and CFD (Computational Fluid Dynamics) analyses to validate different product designs prior to creating physical prototypes, enabling us to predict consequences in cases where it is impossible to create full scale tests on physical products.

We make our own test and production equipment, and in our flow lab, we conduct thorough prototype and life cycle tests prior to release for production. New product types are generally field tested in co-operation with end users before final launch.

Quality certifications

AVK's quality management system is certified according to ISO 9001, and in 2018, we also obtained the ISO/TS 9001 certification.

ISO/TS 29001 is an industry-specific standard for the oil and gas industry based on ISO 9001, but with stricter requirements for control measures and risk management, in that key issues such as staff training, traceability of materials and obtained test results must be documented.

Moreover, we are certified to ISO 14001, the international standard for environmental management, and OHSAS 18001, the international Occupational Health and Safety Standard.



EXPECT US TO EXCEED MARKET STANDARDS

Third party certification

Authorities such as DVGW (Germany), KIWA (Netherlands) and UL & FM (the US) offer certification of finished valves, and these are also recognized and accepted by other countries that do not have their own certification schemes.

By obtaining and maintaining the most widely accepted certification, we show our customers that AVK valves always meet the highest quality and safety standards.



Expect... AVK

In our business there are five cornerstones that must be in place in order to meet customer expectations: Quality, reliability, innovation, sustainability and customer service.

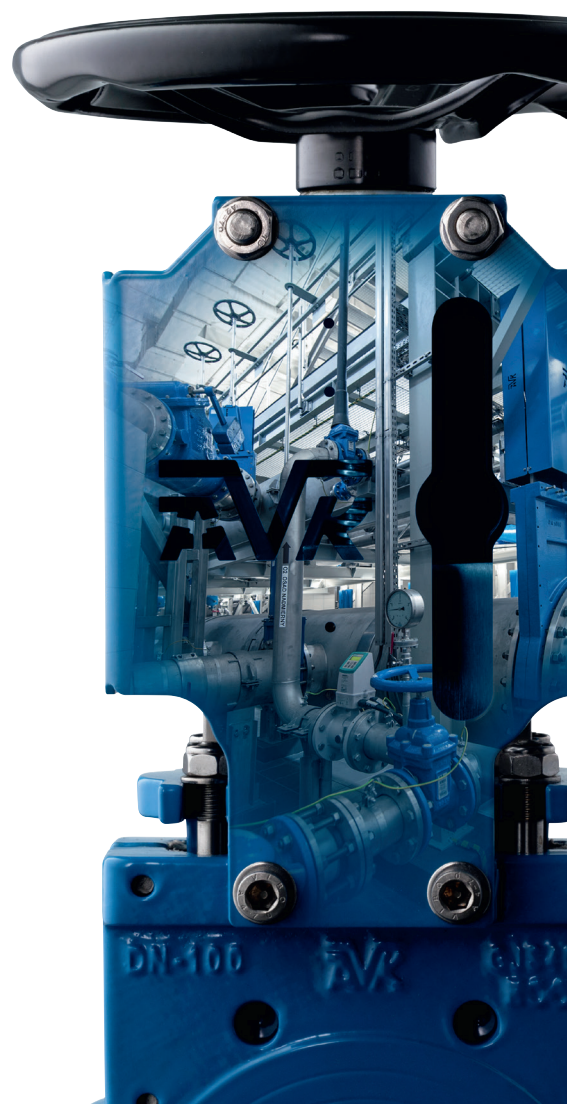
But we need to go further than that. We go further to exceed our customers' needs and expectations.

"Expect... AVK" means that our customers should rightfully expect us to exceed market standards. "Expect... AVK" means that we relentlessly strive for increased customer benefits!

To ensure that we keep pushing the boundaries of what the market can expect, we have formulated promises that we will strive to deliver in all our markets:

- EXPECT** A LONG-TERM PARTNERSHIP
- EXPECT** QUALITY IN EVERY STEP
- EXPECT** LASTING INNOVATIONS
- EXPECT** TOTAL SAVINGS
- EXPECT** SOLUTIONS, NOT JUST PRODUCTS
- EXPECT** GLOBAL LEADERSHIP AND LOCAL COMMITMENT
- EXPECT** PROMPT RESPONSE
- EXPECT** IT TO BE EFFECTIVE AND EASY

See more on www.avkvalves.eu





Water supply

Gate valves and accessories, butterfly valves, check valves, control valves, needle valves, air valves, hydrants, couplings, fittings etc.



Wastewater treatment

Gate valves, knife gate valves, ball and swing check valves, butterfly valves, air valves, penstocks and couplings.

CORE BUSINESSES

Part of vital infrastructures

AVK has delivered gate valves to the water supply sector since the company was established in 1969, and today AVK is a global leader offering an extensive range of valves, hydrants and accessories. In the 70s we obtained our first DVGW approval for gas valves, and due to our high uniform quality and focus on safety and traceability, AVK is still a trusted supplier to the gas supply sector worldwide. For wastewater treatment we offer a very wide valve range according to all major standards as well as customized solutions. The AVK Group is among the largest manufacturers of fire hydrants worldwide and our range

includes UL/FM/VdS approved hydrants, gate and butterfly valves for fire protection.

AVK's products are securing:

- Clean drinking water without contamination or waste of water in the distribution network
- Efficient handling and cleaning of wastewater from households and industries
- Safe distribution of natural gas enabling a wide use of this eco-friendly energy source for heating, cooking and production
- Reliable fire equipment and water supply enabling firefighters to react fast and efficiently in dangerous situations



Gas supply

Gate valves and accessories, ball valves, butterfly valves, couplings and repair clamps.



Fire protection

Fire hydrants, monitors, gate valves, post indicators, butterfly valves, check valves and accessories.

PRODUCT FEATURES AND BENEFITS

Product range brochures

Brochures for each of our core businesses are available for download from our website. Here we explain the features and benefits of each main product group and give a detailed overview of AVK's range within water supply, wastewater treatment, gas supply and fire protection.

Find much more information at www.avkvalves.eu



GATE VALVES FOR WATER



Series 02/60
Flanged gate valve
Face-to-face DIN F5
DN40-500
PN10/16
Ductile iron

- Options:
- replaceable stem sealing
 - internal enamel
 - PN25
 - to GOST or SABS



Series 06/30
Flanged gate valve
Face-to-face DIN F4
DN40-400
PN10/16
Ductile iron

- Options:
- replaceable stem sealing
 - internal enamel
 - with position indicator
 - face-to-face BS



Series 06/30
Flanged gate valve
Face-to-face DIN F4
DN450-1000
PN10/16
Ductile iron
Resilient seated
Replaceable stem sealing

- Options:
- DN50 By-pass
 - face-to-face DIN F5



Series 15/42
Flanged gate valve
prepared for electric actuator
Face-to-face DIN F4
DN40-400
PN10/16
Ductile iron

- Options:
- face-to-face DIN F5
 - hydraulic/pneumatic actuator



Series 06/38
Gate valve
with grooved ends
DN50-300
PN16
Ductile iron



Series 636
Supa Maxi™ gate valve
with universal and tensile
coupling ends for all pipes
DN80-300
PN16
Ductile iron



Series 01/70
Supa Plus™ gate valve
with tensile coupling ends
for PE and uPVC pipes
DN40-300
PN16
Ductile iron



Series 01/80
Gate valve
with "Euro" socket ends
for uPVC pipes
DN40-400
PN16
Ductile iron



Series 32/40
Gate valve
with long spigot ends
for cast iron pipes
DN80-300
PN16
Ductile iron

- Options:
- short spigot ends for D.I. pipes or AC pipes
 - flange/spigot end



Series 33/00
Gate valve
with socket ends
for cast iron pipes
DN80-300
PN16
Ductile iron
With internal enamel

- Options:
- BLS® socket end/
BLS® spigot end



Series 36/80
Gate valve
with PE ends
DN65-500

Od75-630 mm
Ductile iron
PE100/PN10

- Options:
- PE100/PN16
 - PE end/flange



Series 18
Combi-cross
with 4 outlets
DN100-400
PN10/16
Ductile iron

- Options:
- 3 outlets



CHECK VALVES AND BUTTERFLY VALVES FOR WATER



Series 41/60
Swing check valve
Resilient seated
Free shaft
DN50-300
PN10/16
Ductile iron

- Options:
- lever and weight
 - lever and spring
 - closed bushings



Series 41/36
Swing check valve
Metal seated
Closed bushings
DN350-600
PN10/16
Ductile iron

- Options:
- free shaft



Series 874
Tilting disc check valve
With lever and weight
DN150-1600
PN10/16
Ductile iron

- Options:
- hydraulic damper



Series 875
Slanted seat check valve
DN200-1000
PN10/16
Ductile iron



Series 820/00
Butterfly valve
Centric with loose liner
Wafer type
DN25-1000
PN10/16
Ductile iron

- Options:
- various actuators



Series 820/10
Butterfly valve
Centric with loose liner
Lug type
DN25-600
PN10/16
Ductile iron

- Options:
- various actuators



Series 820/20
Butterfly valve
Centric with loose liner
U-section type
DN150-1600
PN10/16
Ductile iron

- Options:
- various actuators



Series 75/10
Butterfly valve
Centric with fixed liner
Wafer type
DN40-1400
PN10/16
Ductile iron

- Options:
- semi lug type
 - full lug
 - various actuators



Series 75/20
Butterfly valve
Centric with fixed liner
Double flanged short
DN50-2000
PN10/16
Ductile iron

- Options:
- double flanged long
 - various actuators



Series 756/100
Butterfly valve
Double eccentric
Double flanged
Integral seat
IP 67 gearbox
DN200-2800
PN10/16
Ductile iron

- Options:
- stainless steel seat
 - IP 68 gearbox
 - ISO-input gearbox
 - PN25 in DN200-1200



Series 756/102
Butterfly valve
Double eccentric
Double flanged
Stainless steel seat
ISO-input gearbox
DN200-2800
PN10/16
Ductile iron

- Options:
- integral seat
 - IP 67 gearbox
 - IP 68 gearbox
 - PN25 in DN200-1200



SERVICE CONNECTION VALVES FOR WATER



Series 03/00
Service connection valve with internal BSP thread
DN25-50
PN16
Ductile iron

Options:
• internal enamel



Series 03/30
Service connection valve with tensile socket ends for PE pipes
DN20-50
PN16
Ductile iron

Options:
• for side tapping with internal thread/external thread



Series 03/65
Service connection valve with tensile screw couplings for PE pipes
DN25-50
PN16
Ductile iron

Options:
• tensile screw coupling for PE pipes/external thread



Series 03/90
Service connection valve with PRK couplings for PE pipes
DN20-50
PN16
Ductile iron

Options:
• internal enamel



Series 16/05
Service connection valve with tensile screw couplings for PE pipes
DN25-50
PN16
Brass

Options:
• T-type bonnet



Series 16/25
Service connection valve with PRK couplings for PE pipes
DN25-50
PN16
Brass

Options:
• T-type bonnet



Series 36/8X
Service connection valve with PE ends
DN25-50

PE100/PN10
Ductile iron

Options:
• PE100/PN16

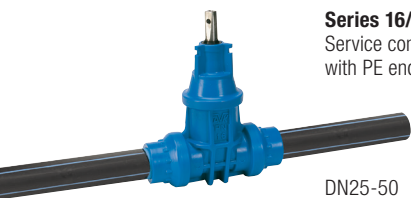


Series 16/50
Service connection valve with tensile socket ends for PE pipes
DN25-50
PN16
POM (Polyoxymethylene)

Options:
• external thread/tensile socket end
• T-type bonnet



Series 16/59
Service connection valve with Pentomech™ couplings
DN25-50
PN16
POM (Polyoxymethylene)



Series 16/80
Service connection valve with PE ends

DN25-50
PE100/PN16
POM (Polyoxymethylene)

Options:
• T-type bonnet



Series 16/90
Service connection valve with PRK couplings
DN25-50
PN16
POM (Polyoxymethylene)

Options:
• PRK coupling/external thread
• T-type bonnet



Series 11/30
Service connection angle valve with external thread on inlet and tensile socket end for PE pipes on outlet
DN25-50
PN16
Ductile iron

Options:
• internal thread on outlet



SUPA LOCK™ THREADLESS CONNECTION SYSTEM FOR WATER



Series 103/00
Service connection valve with Supa Lock™ spigot/Supa Lock™ socket end
DN32
PN16
Ductile iron

Options:
• Supa Lock™ spigot end/PRK coupling



Series 103/31
Angle service connection valve with Supa Lock™ spigot end/push-in socket end
DN32
For PE pipes Ø32-40 mm
PN16
Ductile iron

Options:
• Supa Lock™ spigot end/Supa Lock™ socket end



Series 343/81
Ball valve with Supa Lock™ spigot end/BSP thread
1"-1½"
DN32
PN16
Brass

Options:
• Supa Lock™ spigot end/PRK coupling
• Supa Lock™ spigot end/screw coupling
• with T-type bonnet



Series 100/14
Tapping saddle for iron/steel pipes
Ø60-223 mm
DN32
Ductile iron

Options:
• for PE/PVC pipes
Ø63-225 mm



Series 100/85
Tapping saddle with blade shut-off for iron/steel pipes
Ø50-360 mm
DN32
Ductile iron/stainless steel



Series 107/74
Tapping head with blade shut-off
DN32
Ductile iron



Series 107/31
90° push-in fitting for PE pipes
Ø32-63 mm
DN32
Ductile iron

Options:
• straight push-in fitting for PE pipes



Series 107/36
Fitting with PE pipe end
Ø32-40 mm
DN32
Ductile iron



Series 106/01
Fitting with PRK coupling for PE pipes
Ø32-40 mm
DN32
Ductile iron



Series 106/01
Fitting with screw coupling for PE pipes
Ø32-50 mm
DN32
Brass

Options:
• PRK coupling



Series 106/02
Threaded connector for connection to drilling machines
1"-2"
DN32
Brass

Options:
• ductile iron
• threaded transition connector



Series 109/10
Spacer for flanged connections
DN80-400
DN32
Ductile iron



CONTROL VALVES, NEEDLE VALVES, AIR VALVES AND FLOAT VALVES FOR WATER



Series 859/000X
Control valve
Pressure reducing
DN50-600
PN10/16
Ductile iron/AISI 316



Series 859/001X
Control valve
Pressure sustaining
DN50-600
PN10/16
Ductile iron/AISI 316



Series 872
Needle valve
DN 80-1600
PN 10/16/25/40
Stainless steel DN80-150
Ductile iron from DN200

Options:

- various actuators and accessories
- up to PN100 and DN2000



Series 701/10
Automatic air valve
Threaded BSP ¾" or 1"
DN20-25
PN16
Reinforced polyamide

Options:

- brass base
- ductile iron



Series 701/30
Air & vacuum valve
Inlet flange
DN50-300
PN16
Ductile iron



Series 701/40
Combination air valve
DN20, 25 and 50
Threaded BSP ¾", 1" or 2"
PN16
Reinforced polyamide



Series 701/48
Combination air valve
Threaded BSP 2" /
DN50-150 inlet flange
PN16
Reinforced polyamide

Options:

- ductile iron
- stainless steel
- high flow



Series 701/50
Combination air valve
Inlet flange
DN50-300
PN16
Grey cast iron/Reinforced polyamide



Series 701/60
Combination air valve
Inlet flange
DN50-300
PN16
Ductile iron



Series 701/84
Underground air valve
installation system
DN50-100
PN16
Air valve box of PVC



Series 851/40
Combination air valve
DN50-200
ABS float

Options:

- stainless steel float



Series 854
Ball float valve
Lever and float of PP

DN50-300
PN16
Ductile iron

Options:

- lever and float of stainless steel



HYDRANTS FOR WATER



Series 84/05
Above ground fire hydrant
Break-away design with
additional ball shut-off
Model P7
DN80/100
PN16
Ductile iron

- Options:
- lateral flange



Series 84/72
Above ground fire hydrant
Break-away design with
additional ball shut-off
Model P7
DN80/100
PN16
Stainless steel

- Options:
- lateral flange



Series 84/45
Above ground fire hydrant
Break-away design with
additional ball shut-off
Model P7
"NOSTALGIA"
DN80
PN16
Ductile iron

- Options:
- lateral flange
 - various coatings



Series 84/91
Above ground fire hydrant
Breakable single shut-off
Model N7
DN80/100
PN16
Stainless steel

- Options:
- non breakable
 - double shut-off
 - ductile iron



Series 84/93
Tunnel fire hydrant
Breakable double shut-off
Model N7
DN80
PN16
Stainless steel



Series 09/30
Above ground fire hydrant
Screw down type B
DN80
PN10
Ductile iron

- Options:
- manual or automatic drainage
 - aluminium body
 - gate valve operated



Series 29/40
Underground fire hydrant
with bayonet coupling
DN100
PN16
Ductile iron

- Options:
- 3" stortz oupling
 - 3" NOR coupling
 - 4" stortz coupling



Series 29/50
Underground fire hydrant
with bayonet coupling
With AVK extension
spindle and riser pipe in
stainless steel
DN100
PN16
Ductile iron



Series 29/78
Underground fire hydrant
Free flow
Single shut-off
DN80
PN16
750-1500 mm
Ductile iron



Series 35/31
Underground fire hydrant
Single shut-off
DN80
PN16
750-1500 mm
Ductile iron

- Options:
- stainless steel seat
 - backflow prevention



Series 35/8X
Underground fire hydrant
Additional ball shut-off
DN80
PN16
750-1500 mm
Ductile iron
Stainless steel seat



Series 35/72
Underground fire hydrant
DN100-125
PN16
1000-3500 mm
Ductile iron

- Options:
- drilling according to GOST



GATE VALVES, BUTTERFLY VALVES AND KNIFE GATE VALVES FOR WASTEWATER



Series 06/80
Flanged gate valve
Face-to-face DIN F4
DN40-600 and 800
PN10/16
NBR wedge
Ductile iron

- Options:
- AISI 316 stem
 - face-to-face DIN F5



Series 06/35
Flanged gate valve
with position indicator
Face-to-face DIN F4
DN50-400
PN10/16
EPDM wedge
Ductile iron

- Options:
- NBR wedge
 - face-to-face DIN F5



Series 15/42
Flanged gate valve
for electric actuator
Face-to-face DIN F4
DN40-400
PN10/16
Ductile iron

- Options:
- face-to-face DIN F5
 - hydraulic/pneumatic actuator
 - NBR wedge



Series 715
Flanged gate valve
with hydraulic actuator
Face-to-face DIN F4
DN65-300
PN10/16
NBR wedge
Ductile iron

- Options:
- solenoid valve kit and proximity switches



Series 06/89
Flanged gate valve
with rising stem
Face-to-face DIN F4
DN50-400
PN10/16
Ductile iron



Series 16/54
Service connection valve
with tensile socket ends
for PE pipes
DN25-50
PN16
POM (Polyoxymethylene)

- Options:
- ductile iron



Series 820/00
Butterfly valve
Centric with loose liner
Wafer type
DN25-1000
PN10/16
Ductile iron

- Options:
- for frequent operation
 - various actuators



Series 820/10
Butterfly valve
Centric with loose liner
Lug type
DN25-600
PN10/16
Ductile iron

- Options:
- for frequent operation
 - U-section type
 - various actuators



Series 75/11
Butterfly valve
Centric with fixed liner
Wafer type
DN40-1400
PN10/16
Ductile iron

- Options:
- various actuators



Series 75/31
Butterfly valve
Centric with fixed liner
Semi lug type
DN50-300
PN10/16
Ductile iron

- Options:
- full lug type
 - various actuators



Series 75/20
Butterfly valve
Centric with fixed liner
Double flanged short
DN50-2000
PN10/16
Ductile iron

- Options:
- double flanged long
 - various actuators



Series 702/20
Knife gate valve
with handwheel and
rising stem
DN50-1200
PN10
Ductile iron

- Options:
- handwheel and non-rising stem
 - chainwheel
 - electric or pneumatic actuator
 - lever



CHECK VALVES, AIR VALVES AND PENSTOCKS FOR WASTEWATER



Series 41/61
Swing check valve
Closed bushings
Resilient seated
DN50-300
PN10/16
Ductile iron



Series 41/60
Swing check valve
Free shaft
Resilient seated
DN50-300
PN10/16
Ductile iron



Series 41/36
Swing check valve
Metal seated
Closed bushings
DN350-600
PN10/16
Ductile iron

Options:
• lever and weight
• lever and spring

Options:
• free shaft



Series 53/35
Ball check valve
with flanged ends
DN50-600
PN10
Ductile iron



Series 53/30
Ball check valve
with internal thread
DN32-50
PN10
Ductile iron

Options:
• stainless steel
DN32-80



Series 701/33
Air & vacuum valve
DN80-100
PN16
Steel



Series 701/76
Combination air valve
DN50-200
PN16
Stainless steel

Options:
• steel



Series 701/75
Combination air valve
DN50-200
PN10
Reinforced polyamide

Options:
• PN16



Series 701/78
Large combination air valve
DN80-100
PN16
Steel



Series 701/79
Underground air valve system
DN50-100
PN10
External box of polypropylene



Series 772/61
Wall penstock
Bi-directional up to and
incl. 1200 x 1200 mm,
in larger sizes bi- or uni-
directional
With non-rising stem
Stainless steel
AISI 304
200 x 200 mm -
2000 x 2000 mm

Options:
• rising stem
• AISI 316



Series 772/7172
Channel penstock
Uni-directional up to and
incl. 1000 x 1000 mm,
bi-directional in larger
sizes
With non-rising stem
Stainless steel
AISI 304
200 x 200 mm -
2000 x 2000 mm

Options:
• rising stem
• AISI 316



GATE VALVES, BALL VALVES AND BUTTERFLY VALVES FOR GAS



Series 36/90
Gate valve with PE ends
DN65-400
PE100/PN10 SDR 11
Ductile iron

External epoxy coating

Options:

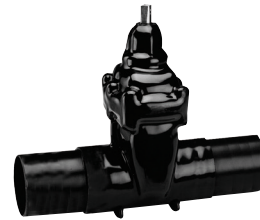
- PE100/PN10/4
- flange/PE end
- ISO top flange
- external PUR coating



Series 46/64
Gate valve
with short spigot ends
DN50-300
PN16
GP240GH
External epoxy coating

Option:

- external PUR coating



Series 46/70
Gate valve
with long spigot ends
DN50-600
PN16
GP240GH
External PUR coating

Option:

- external epoxy coating
- ISO top flange



Series 46/80
Gate valve with long
spigot ends and two
purge points
DN80-600
PN16
GP240GH
External PUR coating



Series 46/90
Gate valve with steel/PE
spigot ends
DN50-300
PN10

GP240GH
External epoxy coating

Options:

- external PUR coating



Series 02/70
Flanged gate valve
Face-to-face DIN F5
DN40-500
PN10/16
Ductile iron
External epoxy coating

Options:

- position indicator



Series 06/70
Flanged gate valve
Face-to-face DIN F4
DN40-600
PN10/16
Ductile iron
External epoxy coating

Options:

- position indicator



Series 15/78
Flanged gate valve
with ISO top flange
DN50-400
PN10/16
Ductile iron
External PUR coating

Option:

- external epoxy coating



Series 36/9X
Service connection valve
with PE ends
DN25-50

PE100/PN10 or 4
Ductile iron
External epoxy coating

Options:

- external PUR coating



Series 03/25
Service connection valve
with internal thread
DN25-50
PN4
Ductile iron
External epoxy coating



Series 85/30
Ball valve
with spigot ends
DN25/Ø20 mm -
DN150/Ø180 mm
PN10
PE100

Options:

- lever
- support base



Series 75/11
Wafer butterfly valve,
centric with fixed liner
DN50-600
PN10/16
Ductile iron

Options:

- semi-lug
- full lug
- double flanged



HYDRANTS AND VALVES FOR FIRE PROTECTION



Series 27/00
 Dry barrel fire hydrant
 Modern style
 Bury depth 305-2438 mm
 17.2 bar/250 PSI
 Ductile iron
 UL/ULC listed,
 FM approved

Inlet options:
 • DN100-150 flanged
 • DN100-150 PE end
 • monitor fire hydrant



Series 24/90
 Wet barrel fire hydrant
 200 PSI
 2 x 2½" + 1 x 4¼"
 outlets
 Ductile iron
 UL listed, FM approved

Options:
 • 1 x 2½" + 1 x 4¼"
 outlets
 • DN100 monitor flange
 and 2 x 2½" + 1 x
 4¼¼" outlets



Series 06/35
 Flanged gate valve
 with position indicator
 DN50-400
 PN10/16
 Ductile iron
 VdS approved
 (DN50-200 only)



Series 06/37
 Grooved end gate valve
 with position indicator
 DN50-300
 PN16
 Ductile iron
 VdS approved
 (DN50-200 only)



Series 45/59
 Flanged gate valve
 with post indicator flange
 DN50-300:
 17.2 bar/250 PSI
 DN350-400:
 13.7 bar/200 PSI
 Ductile iron
 UL/ULC listed,
 FM approved

Options:
 • PE ends



Series 145/46 – 45/56
 Flanged gate valve
 with rising stem
 DN50-300:
 17.2 bar/250 PSI
 DN350-400:
 13.7 bar/200 PSI
 Ductile iron
 UL/ULC listed,
 FM approved

Options:
 • grooved ends
 • grooved/flanged ends



Series 145/50 – 45/59
 Flanged gate valve
 with wrench nut
 DN50-300:
 17.2 bar/250 PSI
 DN350-400:
 13.7 bar/200 PSI
 Ductile iron
 UL/ULC listed,
 FM approved



Series 75/20
 Butterfly valve
 Centric with fixed liner
 Double flanged short
 DN50-300
 PN10/16
 Ductile iron
 FM approved

Options:
 • wafer
 • semilug
 • lug



Series 815
 Butterfly valve
 Centric with rubber
 vulcanized disc
 Grooved ends to AWWA
 C606
 DN65-200
 24.1 bar/300 PSI
 Ductile iron
 UL/ULC listed,
 FM approved



Series 34/00
 Post indicator, telescopic
 for DN100-400 P.I. gate
 valves
 Bury depth: 505-2210 mm
 Ductile iron
 UL/ULC listed,
 FM approved



Series 34/80
 Wall post indicator
 for DN100-400 P.I. gate
 valves
 Stem length: 250-1250 mm
 Ductile iron
 UL/ULC listed,
 FM approved



Series 5190/10
 Swing check valve
 Spring loaded
 Grooved ends to AWWA
 C606
 DN50-200
 24.1 bar/350 PSI
 FM approved

Options:
 • shotgun type
 • with flanges



SUPA MAXI™, SUPA PLUS™ AND SUPA® COUPLINGS AND ADAPTORS



Series 631/00
Supa Maxi™ universal
tensile straight coupling
DN50-600
PN16
Ductile iron

Options:
• for gas PN10



Series 632/00
Supa Maxi™ universal
tensile step coupling
DN40-300
PN10/16
Ductile iron

Options:
• for gas PN10



Series 633/00
Supa Maxi™ universal
tensile flange adaptor
DN40-600
PN10/16
Ductile iron

Options:
• for gas PN10



Series 634/00
Supa Maxi™ universal
tensile end cap
DN50-400
PN16
Ductile iron

Options:
• for gas PN10



Series 635/00
Supa Maxi™ universal
tensile transition coupling
with factory mounted
PE pipe
DN50-300
PN10 or 16
Ductile iron



Series 621/10
Supa Plus™ coupling
Tensile for PE and uPVC
pipes
DN32-300
PN16
Ductile iron



Series 623/10
Supa Plus™ flange
adaptor
Tensile for PE and uPVC
pipes
DN40-300
PN10/16
Ductile iron



Series 624/10
Supa Plus™ end cap
Tensile for PE and uPVC
pipes
DN40-300
PN16
Ductile iron



Series 601
Supa® universal straight
coupling
DN40-400
PN16
Ductile iron



Series 602
Supa® universal step
coupling
DN40-400
PN10/16
Ductile iron



Series 603
Supa® universal flange
adaptor
DN40-400
PN10/16
Ductile iron



COMBI-FLANGES, DISMANTLING JOINTS, COUPLINGS AND TAPPING SADDLES



Series 05
Combi-flange
for PE and
PVC pipes
Non-tensile (PVC) DN50-600
Tensile DN50-300
PN10/16
Ductile iron

Options:
• for ductile iron pipes
• for steel pipes (non-tensile)



Series 05/08
Support bush
for PE pipes
DN50-600
PN6.3, 10, 12.5 or 16
Stainless steel



Series 258
Fabricated straight coupling
for AC, steel, cast iron or
ductile iron pipes
DN350-2000
PN8 to 25
Steel

Options:
• step coupling
• flange adaptor



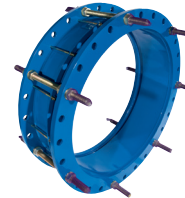
Series 745/01
Repico® grip coupling
Universal and tensile for
all metal pipes
NBR or EPDM sealing
DN15-400
Stainless steel AISI 316

Options:
• for medium pressure
up to DN200



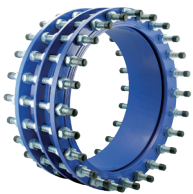
Series 745/20
Repico® slip coupling
Universal and non-tensile
for all pipes
NBR or EPDM sealing
DN15-600
Stainless steel AISI 316

Options:
• 2 locks up to DN1000



Series 265
Dismantling joint
for all types of pipes with
flanged connections
DN350-1200
PN10/16/25
Steel

Options:
• with centre flange
DN50-2200



Series 873
Dismantling joint for all
pipe materials
With centre flange
DN40-2600
PN10/16/25
Ductile iron



Series 10/00
Tapping saddle
for uPVC and PE pipes
DN50-300
Ductile iron
Lower part in stainless
steel from DN250

Options:
• for cast iron, ductile
iron and steel pipes



Series 730
Universal tapping saddle
with blade shut-off
for ductile iron, steel and
other metal pipes
DN50-300
Ductile iron/steel

Options:
• without blade shut-off



Series 727/10
Tapping saddle
with blade shut-off
For PE and PVC pipes
DN80-200
Ductile iron



Series 727/09
Tapping saddle SWIC
for underpressure drilling
With integrated cutter
for PE and PVC pipes
DN50-200
Ductile iron

Options:
• with integrated cutter
for steel pipes



Series 6731
Flanged universal tapping
saddle with blade shut-off
for iron, steel, PE and
PVC pipes
Ductile iron

Options:
• slim type



VALVE ACCESSORIES



Series 04
Fixed surface box
Grey cast iron
Distance ring/square for fixed surface box

Options:
• reversible design



Series 80
Surface box "Classic"
Fixed height
Body of PA+

Options:
• square or round
• lid of cast iron or PA
• for gate valves, service connection valves or underground hydrants



Series 80
Surface box "Classic"
Height adjustable
Body of PA+

Options:
• square or round
• lid of cast iron or PA
• for gate valves, service connection valves or underground hydrants



Series 80
Surface box "Futura"
Fixed height
Body of PA+

Options:
• square or round
• lid of cast iron or PA
• for gate valves, service connection valves or underground hydrants



Series 04/007
Floating surface box for telescopic extension spindle
Body of PE
Flange and lid of ductile iron

Options:
• round - black
• round - blue epoxy
• square - black
• square - blue epoxy



Series 04/008
Floating surface box for telescopic extension spindle
Ductile iron

Options:
• round or square surface plate
• round or square lid
• double surface box



Series 04
Extension spindle for service connection valves
DN25-50

Options:
• telescopic or fixed length



Series 04
Extension spindle for gate valves
DN40-600

Options:
• telescopic or fixed length
• telescopic for double eccentric butterfly valves

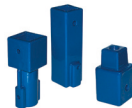


Series 04
Stem caps for gate valves and service connection valves
DN25-600
Ductile iron



Series 08
Handwheel for gate valves
DN50-600
Grey cast iron

Options:
• for double eccentric butterfly valves



Series 756/5
Adaptors for connecting gearside to extension rod or wall post indicator and to post indicator
Stem cap for extension rod fitting inside handwheel
DN300-600
Ductile iron



Series 910
Y-strainer
DN50-300
Ductile iron



REPAIR CLAMPS, DUCTILE IRON FITTINGS AND FOUNTAIN POSTS



Series 748/01
 Repair clamp
 Single band with support plate
 Stainless steel AISI 304 or AISI 316
 NBR or EPDM rubber

Options:
 • fingers
 • handgrip



Series 748/02
 Repair clamp
 Double band with fingers
 Stainless steel AISI 304 or AISI 316
 NBR or EPDM rubber

Options:
 • support plate
 • handgrip



Series 748/03
 Repair clamp
 Triple band with support plate
 Stainless steel AISI 304 or AISI 316
 NBR or EPDM rubber

Options:
 • fingers



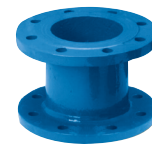
Series 712
 Flanged bend
 Ductile iron

Options:
 • various types



Series 712
 Flanged cross
 Ductile iron

Options:
 • various types



Series 712
 Flanged reducer
 Ductile iron

Options:
 • various lengths



Series 712
 Reducer flange
 Ductile iron



Series 712
 Blind flange
 Ductile iron

Options:
 • various types



Series 712
 Duckfoot bend
 Ductile iron



Series 78/7510
 Fountain post
 "VICTORIA"
 Frost-proof
 DN40
 Grey cast iron

Options:
 • outlet for fire hose connection





MODERNISATION OF POLAND'S LARGEST WASTEWATER TREATMENT PLANT

A comprehensive modernisation of the Czajka Wastewater Treatment Plant has significantly improved both the efficiency of the plant and the water environment in Warsaw. AVK has delivered 1,200 valves for the project.

Until 2013, the Czajka Wastewater Treatment Plant, the largest in Poland and located in Warsaw, only handled wastewater from half of Warsaw and from the neighbouring city of Legionowo. The rest of the capital's wastewater was led directly into the Vistula River causing major environmental problems. Today, the Czajka Wastewater Treatment Plant not only handles all wastewater from the two cities. It is also geared to cope with a rapidly growing population in the two cities, and boasts a central, intelligent control system which ensures more efficient operation overall.

Can handle 435,000 m³ wastewater a day

For several years, the Vistula River, which runs through the Warsaw metropolis, was under pressure from the city's 2.1 million inhabitants producing more than 200,000 m³ of wastewater every day. But with the upgrade of the Czajka Wastewater Treatment Plant, which has been designed to treat 435,000 m³ of wastewater a day – during peak periods up to 515,000 m³ – the local water environment has been secured for many years to come.

1,200 AVK valves

AVK supplied butterfly valves mainly used for aeration, ball check valves and swing check valves used in the pumping stations, gate valves for clean water, and automatic and manual knife gate valves used in the treatment of sludge.

Read the full story and other cases at www.avkvalves.eu



CONTACT

AVK INTERNATIONAL A/S



AVK International A/S is responsible for the geographical region consisting of Continental Europe, Russia, Central Asian countries, Caucasian countries and Northern Africa as per the map above. Please contact us directly or find your local contact in the list.

For the countries marked with grey colour please refer to www.avkvalves.com for contact information.

AVK International A/S

Bizonvej 1, Skovby
DK-8464 Galten
Denmark
Tel: +45 8754 2100
sales@avk.dk
www.avkvalves.eu

AVK International A/S Rep. office Romania

B-dul Agronomiei
No. 8-16, Bl. N1.3
Ap. 3, Sector 1
Burcharest
Romania
Tel: +40 21 326 5017
office@avk.ro
www.avk.ro

AVK International A/S Rep. office the Baltic states

Fabrikas str. 3a
LV-3601 Ventspils,
Latvia
Tel: +371 256 219 95
jutr@avkgroup.com

AVK International A/S Rep. office Greece

Athens
Greece
Tel: +30 69 55 66 48 85
nisi@avkgroup.com

AVK International A/S, Russia

www.avkrussia.com

Oleg Gordienko
Tel: +45 8754 2100
olgo@avk.dk

Andrey Vasenin
Tel: +7 (929) 233 38 80
anva@avk.dk

Aleksandr Belash
Tel: +7 (950) 026-98-22
alebel@avk.dk

AVK International A/S Rep. office the Balkans

Koste Glavinica 10
Belgrade
Serbia
Tel: +381 64 142 19 33
brmi@avkgroup.com
www.avk.rs

AVK International A/S Rep. office Turkey

Çamlık Mh. Pamuk S.
No:23/4 Ümraniye
Istanbul
Turkey
Tel.: +90 216 495 82 84
issi@avkgroup.com

AVK International A/S Rep. office Hungary

Váci út 154
H-1138 Budapest
Hungary
Tel: +36 30 987 1475
tbed@avkgroup.com

EXPECT GLOBAL LEADERSHIP AND LOCAL COMMITMENT



AVK Danmark A/S

Bizonvej 1, Skovby
DK-8464 Galten
Denmark
Tel: +45 8754 2100
salg@avk.dk
www.avkventiler.dk

Vatech 2000 ApS

Værkstedsvej 15
DK-5500 Middelfart
Denmark
Tel.: +45 6440 2060
admin@vatech.dk
www.vatech.dk

AVK Norge AS

Hågasletta 7
N-3236 Sandefjord
Norway
Tel: +47 33482999
avk@avk.no
www.avk.no

AVK Sverige AB

Växthusvägen 5
S-281 51 Hässleholm
Sweden
Tel: +46 451 458 00
sales@avkvalves.se
www.avkvalves.se

AVK France S.A.S.

Z.I. de Villebarou
4 rue de la Garbotière
CS 2904
F-41029 Blois Cedex
France
Tel: +33 2 54 74 23 13
avk@avk.fr
www.avk.fr

AVK Válvulas S.A.

Poligono Industrial Francolí
Parcela 27
ES-43006 Tarragona
Spain
Tel: +34 977 543 008
avk@avkvalvulas.com
www.avkvalvulas.com

AVK Nederland BV

Radeweg 12
P.O. Box 73
NL-8170 AB Vaassen
The Netherlands
Tel: +31 57 857 44 90
info@avknederland.nl
www.avknederland.nl

AVK Finland Oy

Aurinkokuja 5
F-33420 Tampere
Finland
Tel: +358 3 389 1822
toimisto@avk.fi
www.avkfinland.fi

AVK Armaturen GmbH

Schillerstraße 50
D-42489 Wülfrath
Germany
Tel.: +49 2058-901-01
info@avk-armaturen.de
www.avk-armaturen.de

AVK Belgium NV

Zoomstraat 6A
B-9160 Lokeren
Belgium
Tel: +32 93481313
info@avkvalves.be
www.avkvalves.be

AVK Armadan Sp. z o.o.

ul. Jakubowska 1
PL-62-045 Pniewy
Poland
Tel: +48 61 291 20 01
avk@avk.com.pl
www.avk.com.pl

AVK VOD-KA a.s.

Labská 233/11
CZ-412 01 Litoměřice, Předměstí
Czech Republic
Tel: +420 416 734 980
obchod@vodka.cz
www.avkvodka.cz

InterApp Armaturen Holding AG

Grundstrasse 24
CH-6343 Rotkreuz
Switzerland
Tel: +41 (0) 41 798 22 33
info@ch.interapp.net
www.interapp.net

InterApp Ges.m.b.H.

Kolpingstrasse 19
A-1230 Wien
Austria
Tel: +43 (1) 61 623 71-0
info@at.interapp.net
www.interapp.net

AC.MO S.R.L.

I-Via T. da Modena, 28 z.i.
31056 RONCADE (TV)
Italy
Tel: +39 0422 840220
info@acmospa.com
www.acmosrl.com

AVK International A/S

Bizonvej 1
Skovby
8464 Galten
Denmark

Tel.: +45 8754 2100
sales@avk.dk
www.avkvalves.eu

2019-09-05
Copyright © AVK Group A/S 2019

Expect... **AVR**

